

Transforming the World  
for Tomorrow, Global TOP 100

Transforming the World  
for Tomorrow, Global TOP 100



**JEONBUK**  
NATIONAL UNIVERSITY

# Jeonbuk National University Now (2025)



Full time Faculty

**1,060**



Staff members

**1,500**



Enrolled Students

**22,000**

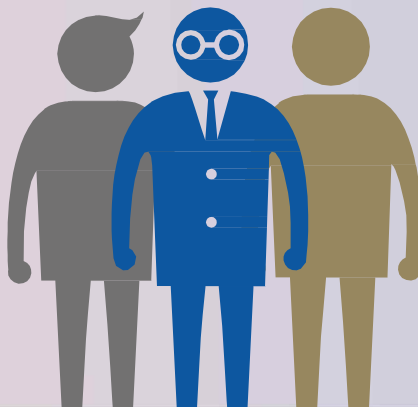


Alumni

**250,000**

Jeonbuk National University  
is one of Korea's 10 national  
flagship universities.

We seek to lead in national  
development by fostering  
student and faculty talent  
through innovative education  
and research.



**5**

Campuses

**2,000**

International  
Students

**15**

Colleges

**7,000**

Ph.D Recipients



# Greatness of Jeonbuk National University



**1<sup>st</sup>**  
among  
flagship universities

The JoonAng Daily  
(23)

**1<sup>st</sup>**  
among  
flagship universities

Leiden Ranking  
(22~22)

**2<sup>nd</sup>**  
among  
flagship universities

QS World University  
Ranking(22)

**2<sup>nd</sup>**  
among  
flagship universities

THE World University  
Rankings(22)

**No.176**  
Polymer  
Engineering

**No.191**  
Chemical  
Engineering

**No. 212**  
Condensed  
Matter Physics

**No. 230**  
Physical  
Chemistry

**No.240**  
Life  
Science

**No.258**  
Materials  
Science

**Top 100 departments  
in the world** (US NEWS, 23)

**Top 200 departments  
in the world** (US NEWS, 23)



# Among Flagship National Universities

Top **1**

Student Satisfaction For 6 consecutive years  
(Korean Standard Association (KSA) 2019~2024)



# Excellence in Education

Investing fully in Student's Education

## JBNU's reputation from outside

**No.1**

Regional  
Universities

Student Satisfaction  
By Korea Standards  
Association  
(2019~2024)

**A**Class

University Innovation  
Support Project's  
comprehensive evaluation  
(2021)

**3**

Consecutive  
Years

Regional Leading  
University  
Fostering Project  
(2021~2023)

**5,797**

Total Capacity of  
Residence Hall



**1,842**

Number of  
International  
Students  
(2023)



**No.1**

University Library  
Evaluation in the Nation  
The Best Institution  
from pilot evaluation



**JEONBUK**  
NATIONAL UNIVERSITY

# The 15 Colleges of JBNNU

- College of Nursing
- College of Business & Economics
- College of Engineering
- College of Agricultural Life Sciences
- College of Education
- College of Social Sciences
- College of Human Ecology
- College of Veterinary Medicine
- School of Pharmacy
- College of Arts
- College of Medicine
- College of Humanities
- College of Natural Sciences
- School of Dentistry
- College of Environmental & Bioresource Sciences





## Majors

### Notes

[★] means a department offers a thesis guidance in English, [C] in Chinese, [G] in German and [J] Japanese.  
(Chinese Language and Literature: Requires TOPIK L5 when submitting graduation thesis in Chinese)

• Departments requiring to submit Form 1 will not conduct an interview or evaluation for applicants who do not submit it.

• Language in Lecture: Korean 'K', English 'E', Spanish 'S', French 'F', Chinese 'C', German 'G', Japanese 'J'. No information '-'

• Majors in blue have participated in BK21 project. (<https://bkggraduate.jnu.ac.kr/>)

• Majors in green are English Track (All classes are conducted in English)

• Language requirement: - TOPIK L2, Completion of a Korean Language Course L2: K2 / TOPIK L3, Completion of a Korean Language Course L3: K3

- TOPIK L4, Completion of a Korean Language Course L4: K4 / TOPIK L5, Completion of a Korean Language Course L5: K5

- TOFEL IBT 80, IELTS 5.5, TEPS 600, New TEPS 326, or native English speaker: E1

- Those who apply Electronic Engineering or Computer Science and Engineering must submit English certificate: E1\*

- TOEFL IBT 90, IELTS 6.0, TEPS 634, New TEPS 346, or native English speaker: E2

- Spanish DELE B1: S1 / Zertifikat Deutsch B1: G1 / JLPT 2: J1 / French DELF B1: F1

- Comma(,) Mark: You can apply for the department with any one of language requirements the department has requested. (ex) 0C3, E1

- Plus(+) Mark: You have to fulfil both language requirements to apply for the department.

- Department with marks require language test score. Failure to do so will result in automatic disqualification.

- Department with no marks does not require any language proficiency test score

• If a separate number is listed in the transfer, only that semester will be recruited, and if the number is not listed, the entire semester will be recruited.

• Graduation Qualification Requirements: Different by department, consultation with the department is required after start of semester

### General Department

※ Graduate Course (M Master / D Doctoral / T Transfer / C Combined Master and Ph.D)

Field(Campus)	Major or Department	Course				[Form]	Language in Lecture	Language required
		M	D	C	T			
Humanities / Social Sciences (Jeonju)	Business Administration★	○	○			○(D)	K, E	M: K4, D: K4, E2
	Economics★	○	○				K	K3, E1
	Archaeology and Cultural Anthropology★	○	○		○(2,3,4)		K	K4
	Education	○	○		○(M 2,3)	○	K	K4, E1
	Korean Language Education★	○				○	K	K3, E1
	Korean Language and Literature	○	○				K	M: K4, D: K5
	Records, Archives, and Information Science	○	○			○	K	K4
	Agricultural Economics★	○	○	○	○	○	K	K3
	German Studies G	○	○	○	○(2)	○	K, G	K3, G1
	International Trade★	○	○	○	○(2)		K, E	K4, E2
	Intangible Heritage & Information	○	○		○(2,3,4)		K	K4
	Library and Information Science	○	○			○	K	K4
	Law	○	○		○(2,3)		K	K3
	International Cyber Trade and Area Study★	○					E	E1
	History	○	○			○	K	K5
	Social Welfare★	○	○				K	K3, E1
	Sociology★	○	○	○	○(2,3)		K	K3, E1
	Mathematics Education★	○	○	○	○(2,3)		K, E	K4, E1
	Spanish & Latin American Studies★	○					K, E, S	(K3,E1)+S1
	Media and Communication Studies★	○	○		○(2,3)		K	K4
	Psychology★	○	○	○		○	K	K4, E1
	Child & family studies★	○	○	○			K, E	K4
	Language and Literature Education★	○				○	K	K3, E1
	English Education★	○			○		E	E1
	English Language and Literature★	○	○	○	○(2,3,4)		K, E	K4, E1
	Cognitive Science★	○	○		○(M 2,3)	○	K	E1
	Japanese Studies J	○	○	○	○(2,3,4)		K, J	K4, J1
	Political Science★	○	○		○(2,3,4)	○	K	K4
	Chinese Language and Literature C	○	○	○	○(2)		K, C	K4
	Philosophy★	○	○				K	K4
	French and African Studies	○	○				K, F	(K3,E1)+F1
	Korean Language as a Second Language Education	○					K	K4
	Public Administration★ C, J	○	○	○	○(2)		K	K4
	Accounting★	○	○				K	K4
Natural Sciences / Agriculture (Jeonju)	Nursing★	○	○			○	K	K3, E1
	Science Education (Physics Education)★	○				○	K, E	E1
	Science Education(Biology Education, Geography Education)★	○				○	K, E	K3, E1
	Science Education (Chemistry Education)★	○					K, E	
	Science Education★	○	○			○	K, E	
	Science Studies★	○	○	○	○(2)		K, E	K3, E1
	Nanoscience and Technology★	○	○	○	○	○	K, E	
	Nano Semiconductors and Displays★	○	○	○	○(2,3)	○	K, E	

Field/Campus	Major or Department	Course				[Form1]	Language in Lecture	Language required
		M	D	C	T			
Natural Sciences/ Agriculture (Jeonju)	Agricultural Engineering★	○	○		○(2,3,4)	○	K, E	K4
	Agricultural Biology★	○	○	○	○(2,3,4)	○	K	
	Agricultural Machinery Engineering★	○	○	○	○(2,3,4)	○	K, E	
	Agriculture and Convergence Technology★	○	○	○	○(2,3,4)	○	K, E	
	Agronomy★	○	○			○	K	
	Agriculture Chemistry★	○	○			○	K, E	
	Wood Science Technology★	○	○		○(2,3,4)	○	K, E	
	Physics★	○	○	○	○		K, E	K3, E1
	Molecular Biology★	○			○	○	K, E	K3, E1
	Bioactive Materials	○	○	○	○	○	K	
	Biology★	○	○	○	○(M/C 2,3,4)		K, E	
	Human Ecology★		○				K	
	Mathematics★	○	○	○			K, E	K3, E1
	Sports Science★	○	○			○	K	
	Food science & technology★	○	○			○	K, E	
	Food Science & Human Nutrition★	○	○			○	K, E	K4, E2
	Pharmacy★	○	○	○	○(2,3)	○	K, E	
	Medical Science★	○	○	○	○(C)	○	K, E	
	Fashion Design★	○			○(2)		K	K4
	Horticulture★	○	○			○	K, E	
	Landscape Architecture★	○	○		○(2,3,4)		K	K3, E1
	Housing Environmental Design★	○	○	○		○	K, E	K4
	Earth and Environmental Sciences ★	○	○	○	○	○	K, E	
	Animal sciences★	○	○	○	○(2,3,4)	○	K, E	
	Dental Science	○	○	○	○		K	
	Statistics	○	○	○			K	K3, E1
	Chemistry★	○	○	○	○	○	K, E	
Natural Sciences/ Agriculture (Iksan)	Life Style Medicine★	○	○	○	○	○	K, E	K3, E1
	Biotechnology★	○	○	○	○	○	K, E	
	Environmental Biotechnology★	○	○	○	○	○	K, E	
	Ecology Landscape Architecture-Design★	○	○	○	○	○	K, E	K4
Natural Sciences (Jeongeup)	Bio-convergence Science★	○	○		○		K, E	
Medicine (Jeonju)	Medicine★ (Those with Bachelor's degree in Medicine)	○	○	○	○(C)	○	K, E	
	Dentistry	○	○	○	○		K	
Medicine (Iksan)	Veterinary Medicine★	○	○	○		○	K, E	
	Veterinary and Animal Science★	○	○	○		○	K, E	
Engineering (Jeonju)	IT Applied Systems Engineering	○	○			○	K	
	Architecture and Urban Engineering★		○			○	K	K4, E1
	Architecture Engineering★	○				○	K	K4, E1
	Metallurgical Engineering★	○	○	○		○	K, E	
	Mechanical Engineering★	○	○	○		○	K, E	K3, E1
	Mechanical Design Engineering★	○	○	○	○(M,D 2,3 /C 2-5)	○	K, E	
	Mechanical System Engineering★	○	○	○		○	K, E	
	Nano Convergence Engineering★	○	○	○		○	E	
	Urban Engineering★	○		○		○	K	K3, E1
	Design and Manufacturing★	○	○			○	K, E	
	Mechatronics Engineering★	○	○			○	K, E	E2
	Bio-Nano System Engineering★	○	○	○	○(M,D 2,3 /C 2-5)	○	K, E	
	Bio-nano Convergence Engineering★	○	○	○	○(2,3)	○	K, E	
	Semiconductor and Chemical Engineering★	○	○	○	○(2,3)	○	K, E	
	(Semiconductor Engineering, Chemical Engineering)							
	Industrial System Engineering★	○	○	○	○(2)	○	K, E	K3, E1
	Bioprocess Engineering★	○	○	○	○(2,3)	○	K, E	
	Software Engineering★	○	○	○		○	K, E	K4, E1
	Energy Engineering★	○	○	○	○(M,D 2,3 /C 2-5)	○	K, E	
	Integrated Energy-AI★	○	○	○	○(2,3)	○	K, E	
	Energy Storage - Conversion Engineering★	○	○	○	○	○	K, E	
	Fuel Cell Engineering	○	○	○		○	K, E	
	Mineral Resources and Energy Engineering ★	○	○	○		○	K, E	K3, E1
	Materials Science and Engineering★	○	○	○	○(2)	○	K, E	E1
	Electrical Engineering★	○	○	○		○	K, E	K3, E1
	Electronic Engineering★	○	○	○	○(2-8)	○	K, E	K3, E1*
	Computer Science and Engineering★	○	○	○		○	K, E	K3, E1*
	Electronic Information Materials Engineering★	○	○	○		○	E	
	Carbon Materials & Fiber Engineering★	○	○	○	○(2,3)	○	K, E	K3, E1
	Civil Engineering★	○	○	○	○(2,3,4)	○	K, E	
	Applied Plasma & Quantum Beam Engineering★	○	○	○			K, E	



Field/Campus	Major or Department	Course				(Form1)	Language in Lecture	Language required
		M	D	C	T			
Engineering (Jeonju)	Aerospace Engineering★	○	○			○	K, E	K4, E1
	Healthcare Engineering★	○	○	○	○	○	K	K3
	Environment Engineering★	○	○	○	○	○	K, E	
	Environment and Energy★	○	○	○	○	○	K, E, S	
	JBNU-KIST Industry-Academia Convergence Research★	○	○	○		○	K, E	
Engineering (Saemangeum)	Convergence Technology Engineering★	○	○		○(2,3,4)	○	K, E	
Art (Jeonju)	Dance	○					K	K3
	Fine Arts	○	○		○(2,3,4)	○	K	K3
	Industrial Design★	○			○(2)		K, E	
	Music	○	○		○(2)		K	K3
	Physical Education★	○	○				K, E	
	Korean Music	○	○		○		K	

### Joint Research Institute Graduate Program

※ Transfer admission doesn't offer the Joint Research Institute Graduate Program

College	Research Institute	Major or Department
Engineering	Rural Development Administration	Polymer Nano Science&Technology/Nano Convergence Engineering/Metallurgical Engineering/Design and Manufacturing/Semiconductor and Chemical Engineering/Bioprocess Engineering/Materials Science and Engineering/Environment Engineering/Environment and Energy/Applied Plasma & Quantum Beam Engineering/Computer Science and Engineering
	Korea Institute of Science and Technology	Polymer Nano Science&Technology/Metallurgical Engineering/Mechanical Design Engineering/Nano Convergence Engineering/Semiconductor and Chemical Engineering/Materials Science and Engineering/Electronic Information Materials Engineering/Carbon Materials & Fiber Engineering/Aerospace Engineering/
	Korea Research Institute of Bioscience and Biotechnology	Energy Storage - Conversion Engineering
	Korea Institute of Industrial Technology	Metallurgical Engineering/Mechanical Engineering/Mechanical Design Engineering/Materials Science and Engineering/Carbon Materials & Fiber Engineering
	Korea Institute of Energy Research	Metallurgical Engineering/Mechanical Engineering/Mechanical Design Engineering/Mechanical System Engineering/Semiconductor and Chemical Engineering/Materials Science and Engineering/ Electrical Engineering/ Electronic Information Materials Engineering/Energy Storage - Conversion Engineering/Mechanical Engineering/IT Applied Systems Engineering
	- Korea Atomic Energy Research Institute - Korea Institute of Industrial Technology - Electronics and Telecommunications Research Institute	Electrical Engineering/Electronics and information Engineering
	Korea Atomic Energy Research Institute	Semiconductor and Chemical Engineering (Chemical major)/Carbon Materials & Fiber Engineering/Environment Engineering
	Korea Research Institute of Chemical Technology	Polymer Nano Science&Technology, Energy Storage - Conversion Engineering
	Korea Food Research Institute	Carbon Materials & Fiber Engineering
	Korea National Food Cluster	Industrial System Engineering
Agriculture & Life Sciences	Korea forest Research institute	Agricultural Biology/Wood Science Technology/Landscape Architecture
	Rural Development Administration	Agricultural Engineering/Agricultural Biology/Agricultural Economics/ Agronomy/Agriculture Chemistry/Wood Science Technology(M)/Food Science & technology/Horticulture/Wood Science Technology(M)/Forestry/Landscape Architecture/Animal Science
	Korea National Food Cluster	Food Science & technology
	Korea Food Research Institute	Food Science & technology/Animal Science
	Korea Atomic Energy Research Institute	Agriculture Chemistry/Wood Science Technology/Horticulture
Education	Korea Research Institute of Chemical Technology	Agriculture Chemistry(M)
	Rural Development Administration	Science Education(Biology Education Major)(M)/Science Education(D)
	Korea National Food Cluster	Food Science & Human Nutrition/Human Ecology(D)
	Korea Food Research Institute	Food Science & Human Nutrition
Human Ecology	Korea Food Research Institute	Food Science & Human Nutrition(M)/Human Ecology(D)
Arts	Rural Development Administration	Industrial Design(M)
Medicine	Rural Development Administration	Medical Science
Humanities	Rural Development Administration	Archaeology and Cultural Anthropology
Natural Sciences	Korea Research Institute of Chemical Technology	Biology/Chemistry
	Korea Research Institute of Bioscience and Biotechnology	Biology/Molecular Biology(M)/Bioactive Materials/Bio Convergence Engineering
	Korea Institute of Science and Technology	Physics/Bioactive Materials/Chemistry
	Rural Development Administration	Molecular Biology(M)/Bioactive Materials/Biology/Earth and Environmental Sciences/Statistics(M)
	Korea Atomic Energy Research Institute	Biology/Bio Convergence Engineering
Veterinary Medicine	Korea Atomic Energy Research Institute	Veterinary Medicine
	Rural Development Administration	Veterinary Medicine
	Rural Development Administration	Biotechnology(D)/Ecology Landscape Architecture Design(D)/Environmental Biotechnology
Environmental & Bio-resource Sciences	Rural Development Administration	Biotechnology(D)
	Korea Research Institute of Bioscience and Biotechnology	Biotechnology(D)
	Korea National Food Cluster	Biotechnology(D)



# JBNU Jeonju Campus(Graduate)

## Application & Admission Schedule

- **Application Schedule**

(1<sup>st</sup> Round) Sep 22 – Oct 3, 2025

(2<sup>nd</sup> Round) Nov 5 – Nov 19, 2025

(3<sup>rd</sup> Round) Dec 24 – Dec 31, 2025

- **Admission Schedule : Mar 2026**

## Admission Requirements

- **General Requirements**

1) Applicants must be able to take courses in either Korean or English

2) Applicants must meet the language proficiency requirements specified by each department.

# Scholarship System for International Students

## Admission Scholarship

- **80% tuition waiver** for the first semester  
(about KRW 2,400,000 ~ 4,900,000)

Available to all international Students

## Academic Excellence Scholarship (from 2<sup>nd</sup> semester)

- Based on GPA from the previous semester
- Tuition reduction ranging from **20% to 100%**

## TOPIK Scholarship

- **Improve TOPIK Level scores** after admission
- Scholarships are granted for each attainment of TOPIK Level 4 or higher

## BK Research Scholarship

- Students participating In the BK project

Master  
about  
KRW 1,000,000KRW/month

Doctor  
About  
KRW 1,300,000~1,600,000/month

## Research Scholarship

- Students participating in the professor's research

Master  
about1,200,000KRW/month

Doctor  
about1,500,000KRW/month

※ The amount of scholarship may vary depending on the research funding.



# Get in Touch with Us

## JBNU

▶ Undergraduate Admission:  
**admissionu@jbnu.ac.kr**

▶ Graduate Admission:  
**admissiong@jbnu.ac.kr**

▶ Feeling Korea Program:  
**hanalee@jbnu.ac.kr**

▶ Korean Language Education Center:  
**jb nuklec@jbnu.ac.kr**

Instagram

@jbnu\_international\_affairs



Instagram

@jb nuklec



*If you have any questions, please don't hesitate to contact us !*